

Battery Park City Condo For Sale



2 SOUTH END AVENUE, UNIT 3P

1 BEDROOM • 1 BATHROOM • 751 SF • Asking \$597,000

This beautifully renovated corner apartment faces southeast, has a ton of natural light all day, and is the largest of the one bedroom lines at The Cove Club. It has a large bedroom, living room, desk area, and a dining area across from a pass-thru kitchen. The apartment was renovated a few years ago with wood floors, new bathroom and kitchen with stone counter tops, new appliances, and a large pantry. This well-maintained unit is ready for you to begin enjoying your new home in Battery Park City today.

Common Charges: \$1,550 / month

Real Estate Taxes: \$1,200 / month

FOR MORE INFORMATION:

Demetri Ganiaris

GANIARIS REALTY GROUP

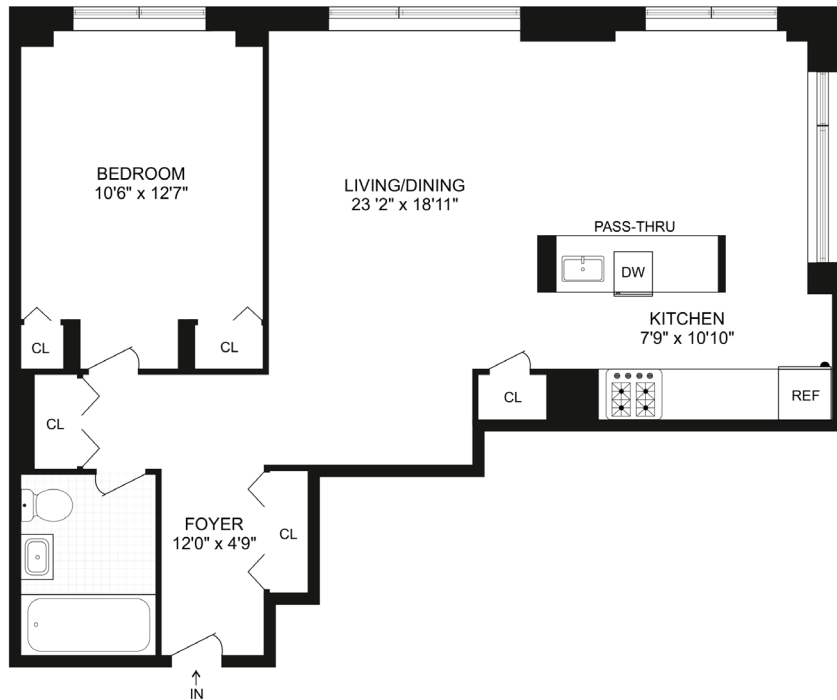
+1 (917) 658 2563 | dganiaris@ganiarisrealty.com

All information is from sources deemed reliable. No representation is made as to the accuracy thereof, and such information is subject to errors, omission, changes or withdrawal without notice. All square footage and dimensions are approximate.



GANIARIS
REALTY GROUP

Battery Park City Condo For Sale



2 SOUTH END AVENUE, UNIT 3P

1 BEDROOM • 1 BATHROOM • 751 SF • Asking \$597,000

THE COVE CLUB is a beautifully maintained condominium building, located on a cul-de-sac at the water's edge in Battery Park City. Residents enjoy an expansive roof deck, gym, lounge, and 24-hour doorman service. The building also has a garage, accessible through the lobby, and laundry facilities on the 2nd floor.

The building is steps from the parks, shops, and dining along the Battery Park promenade, including Brookfield Place, Le District, Hudson Eats, and Westfield World Trade Center. Subway access is just across the West Side Highway, where you will find the 4, 5, R, and 1 trains.

FOR MORE INFORMATION:

Demetri Ganiaris
GANIARIS REALTY GROUP
+1 (917) 658 2563 | dganiaris@ganiarisrealty.com

All information is from sources deemed reliable. No representation is made as to the accuracy thereof, and such information is subject to errors, omission, changes or withdrawal without notice. All square footage and dimensions are approximate.

