

Tribeca Residential Loft for Sale



19 MURRAY STREET, 4TH FLOOR

2 BEDROOMS • 2 BATHROOMS • 1,900 SF • Asking \$2,695,000

This full floor, fully renovated, 2 bed, 2 bath Tribeca loft has a keyed elevator entrance into a south facing sizable living room with high ceilings and beautiful 3 inch pine wood floors. The eat-in kitchen has Ceasarstone countertops, tons of storage, stainless steel appliances, gas stove and cook top, dishwasher, and garbage disposal. Off the kitchen is a laundry room with a Miele washer and dryer. The bathrooms are well-appointed with marble and the main bathroom has a soaking tub. The loft has 9 foot ceilings, great light and ample storage closets. This wonderful no fuss condominium provides heat and hot water and has a common roof deck. It also has a huge 10 x 15 foot storage room in the basement.

Common Charges: \$1,500 / month.

Real Estate Taxes: \$2,382 / month.

FOR MORE INFORMATION:

Demetri Ganiaris

GANIARIS REALTY GROUP

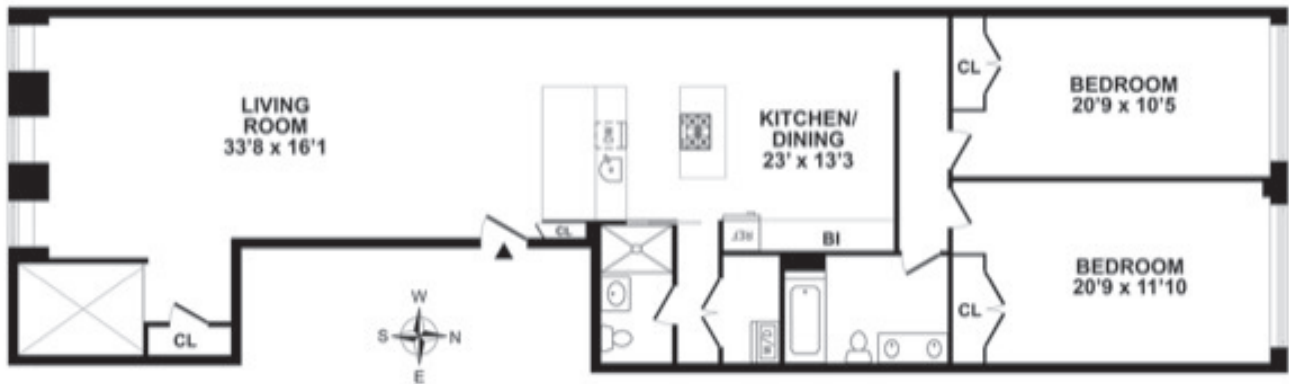
+1 (917) 658 2563 | dganiaris@ganiarisrealty.com

All information is from sources deemed reliable. No representation is made as to the accuracy thereof, and such information is subject to errors, omission, changes or withdrawal without notice. All square footage and dimensions are approximate.



GANIARIS
REALTY GROUP

Three Bedroom Tribeca Loft For Sale



19 MURRAY STREET APT 4
FLOOR PLAN FOR IDENTIFICATION PURPOSES ONLY-NOT TO SCALE

19 MURRAY STREET, 4TH FLOOR

2 BEDROOMS • 2 BATHROOMS • 1,900 SF • Asking \$2,695,000

19 Murray Street is a prewar condo building originally built in 1915 and renovated in 2004. It is a six-floor elevator building with four residential units and a ground floor retail unit occupied by dental office. It has a common roof deck and large storage rooms in the basement.

Located just east of Church Street in Tribeca. Whole Foods, Target, Brookfield Place, Westfield World Trade Center, and other shops are three to four blocks away, and some of the city's best restaurants and galleries are yours to enjoy. The building has tremendous transport access – eight subway lines are within 3 blocks 2, 3, 4, 5, 6, A, C, and R.

FOR MORE INFORMATION:

Demetri Ganiaris
GANIARIS REALTY GROUP
+1 (917) 658 2563 | dganiaris@ganiarisrealty.com

All information is from sources deemed reliable. No representation is made as to the accuracy thereof, and such information is subject to errors, omission, changes or withdrawal without notice. All square footage and dimensions are approximate.

