

150 Beekman Street

SOUTH STREET SEAPORT | 2nd Floor Office / Showroom Space for Lease



SPACE OVERVIEW

APPROXIMATE SIZE:

800 SF

LOCATION:

Beekman Street, Between Front and South Streets

CEILING HEIGHT:

9'3"

RENT:

\$3,995 / month

TERM:

Flexible

POSSESSION:

Immediate

CONDITION:

Move-in ready, excellent condition

ALLOWED USES:

Office, Showroom, Gallery

ACCESS:

24/7, 2nd-Floor walk-up

COMMENTS:

Space and building were fully renovated in 2015 and updated in 2019. Space has hard wood floors, and exposed brick with large windows. It is currently partitioned into two areas (roughly 500 SF & 300 SF), with a private bathroom and central HVAC. Main entry is with a keyfob, and there is an audio/visual intercom.

FOR MORE INFORMATION:

Demetri Ganiaris

GANIARIS REALTY GROUP

+1 (917) 658 2563 | dganiaris@ganiarisrealty.com



GANIARIS
REALTY GROUP

150 Beekman Street

SOUTH STREET SEAPORT | 2nd Floor Office / Showroom Space for Lease

BUILDING AND AREA

150 Beekman Street is located within the Historic Seaport District with cobble stone streets, small shops, the vibrant Fulton Street pedestrian walk, IPIC theaters, and the newly renovated and expanded Pier 17. 150 Beekman, is a 4 story, mixed-use turn of the century building which was fully renovated in 2015.



FOR MORE INFORMATION:

Demetri Ganiaris

GANIARIS REALTY GROUP

+1 (917) 658 2563 | dganiaris@ganiarisrealty.com

All information is from sources deemed reliable. No representation is made as to the accuracy thereof, and such information is subject to errors, omission, changes or withdrawal without notice. All square footage and dimensions are approximate.

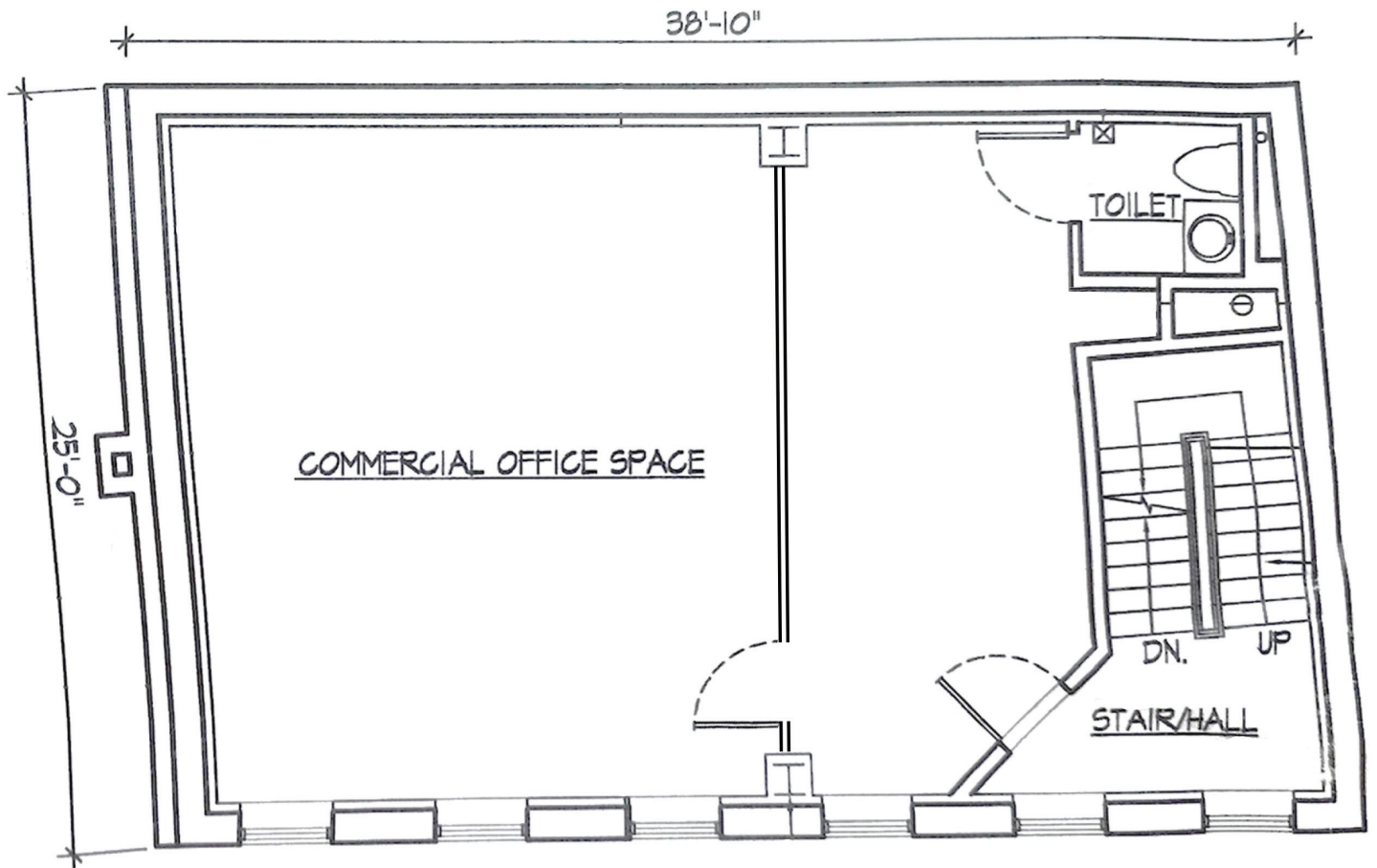


GANIARIS
REALTY GROUP

150 Beekman Street

SOUTH STREET SEAPORT | 2nd Floor Office / Showroom Space for Lease

FLOOR PLAN



FOR MORE INFORMATION:

Demetri Ganiaris

GANIARIS REALTY GROUP

+1 (917) 658 2563 | dganiaris@ganiarisrealty.com

All information is from sources deemed reliable. No representation is made as to the accuracy thereof, and such information is subject to errors, omission, changes or withdrawal without notice. All square footage and dimensions are approximate.



GANIARIS
REALTY GROUP